

Newsletter



Friday 26th May 2023

Dear Parents/Carers,

The sunshine appears to have finally arrived - at last! Fingers crossed it remains for next week and everyone can enjoy some time outdoors over the bank holiday and half term.

We have continued our emphasis on reading and parental involvement this week: 1ED had a great trip to the library this week whilst 5KC enjoyed this week's reading café.

Further enrichment opportunities were also provided to Year 2, who enjoyed a wonderful day learning all about careers in the Skills Escalator day at Park Road.

We are busy preparing in school for all the upcoming events planned in for after half term. Please see below for key dates. Mr Jones is busy planning sports day this year - I have heard a little rumour that there may be some parent races on offer! There's plenty of time to brush off those trainers and put in that training! We will also be running a raffle during the sports days - please read on for further information.

This newsletter also contains some key information relating to the upcoming discos - timings and prices.

Wishing you all a lovely weekend - we look forward to welcoming you all back to school on Tuesday, 6th June.

Lisa McConnell
Head of School

Calendar:

June:

Monday 5th June – PD Day – school closed to pupils

Week commencing 12th June – sports days:

- **Years 3 & 4:** Monday 12th June, 8.55-10.15
- **Years 5 & 6:** Tuesday 13th June, 8.55-10.15
- **Years 1 & 2:** Wednesday 14th June, 8.55-10.15
- **EYFS:** Thursday 15th June, 8.55-10.15

22nd June – School Discos – see newsletter for info

- **EYFS:** 2.00-3pm;
- **Years 1, 2 & 3:** 3.30-4.45pm
- **Years 4 & 5:** 5.00-6.15pm

27th & 28th June: Kip on a Ship residential (Year 5)

30th June - Trust-wide PD day (school closed)

July:

5th-7th July: Year 6 Mersea Residential

Thursday 13th July – Year 6 Disco: 4.45-6.15pm

Friday 14th July – Year 6 Graduation 2pm

Week commencing 17th July: Transition days – more details to follow

Visit from the Police

The police are currently responding to reports of anti-social behaviour in the community and are visiting local primaries to raise awareness amongst schools. Year 5 & 6 had a visit today to talk about the importance of respecting our community and its residents, and also maintaining high standards of behaviour whilst out and about with friends.

It is recognised that with the onset of summer, many children will be visiting the parks before and after school. The police emphasised that pupils are recognisable from their school uniforms and that their conduct should maintain the high standards they demonstrate in school.

Thank you for your support in reinforcing this message.

THANK
YOU!

Make a Wish Day



Friday 9th June the children are allowed to dress up as their dream (what they want to be when they are older e.g. dress up as a teacher, a police officer, a vet).

Please bring in £1.00 to donate to Make a Wish.

Start collecting coppers!

At home time, on Friday 9th June, there will be collection pots on the gate to put any coppers you have at home.

Every penny counts!





Place Farm Sports Day Raffle!

During each of this year's sports days we will be running a raffle as a fundraising activity.

Tickets will cost £1 each and can be bought on each sports day, with the winner being drawn and announced at the end of the week via Class Dojo.

Prizes will mainly but not exclusively be linked to the theme of sport and physical activity!

We very much welcome any donations that you are able/willing to provide for the raffle! These can be handed to the office or to your child's class teacher by **Friday, 9th June**.

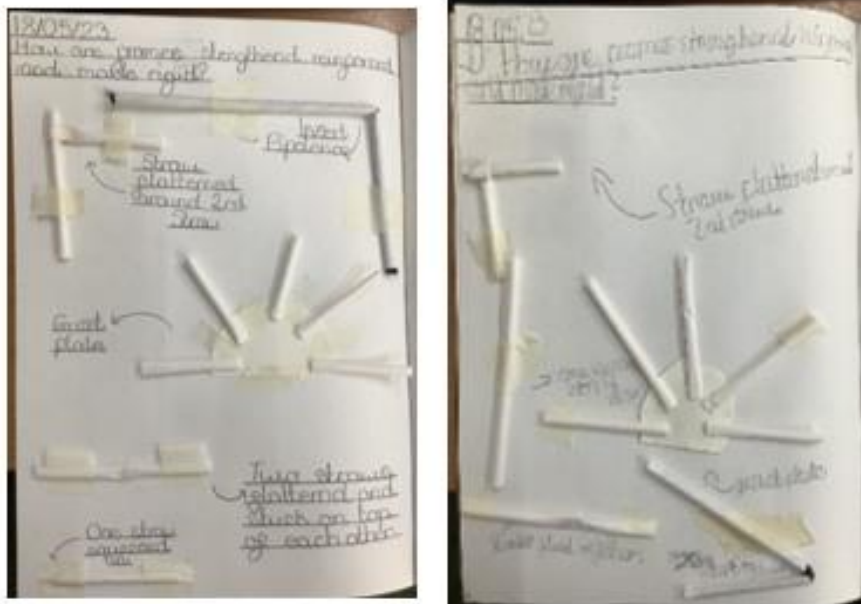
We will also be running '*A Pound in a Bucket*' whereby any donations of £1 will be added to the bucket with a name or number attached. The winning number/name will then be pulled out at random - the winner receiving half of the donations received in the bucket!

You've got to be in it to win it!

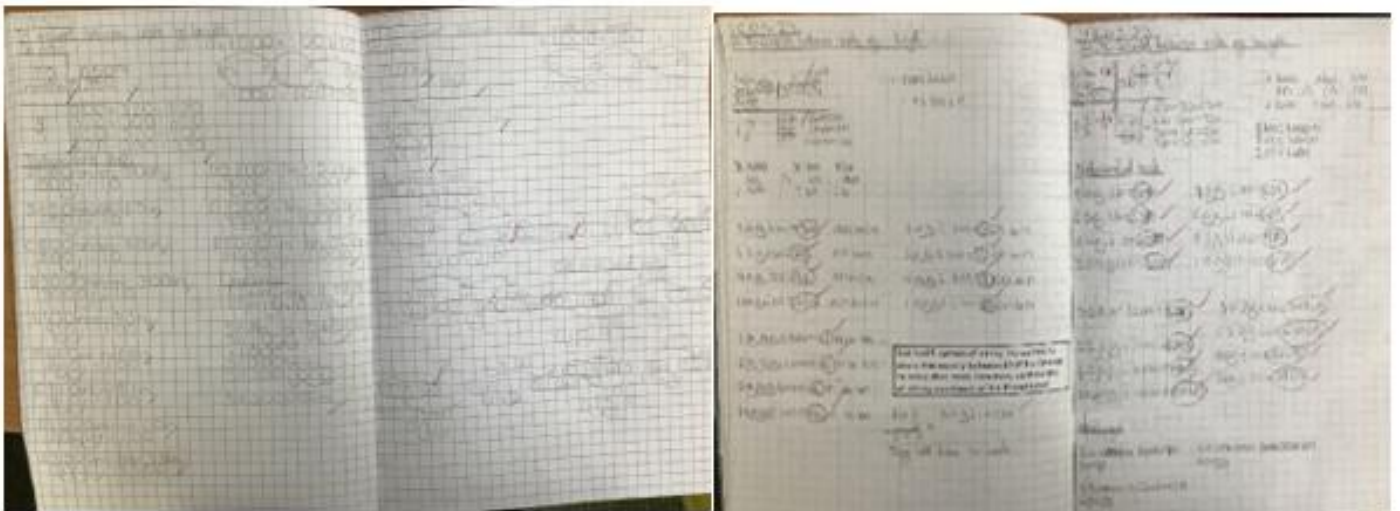
Year 5 Newsletter

Year Five have had a brilliant start to the Summer Term. They have taken part in a variety of competitions, including designing their own tote bag to fight against discrimination and the National Numeracy Day competition.

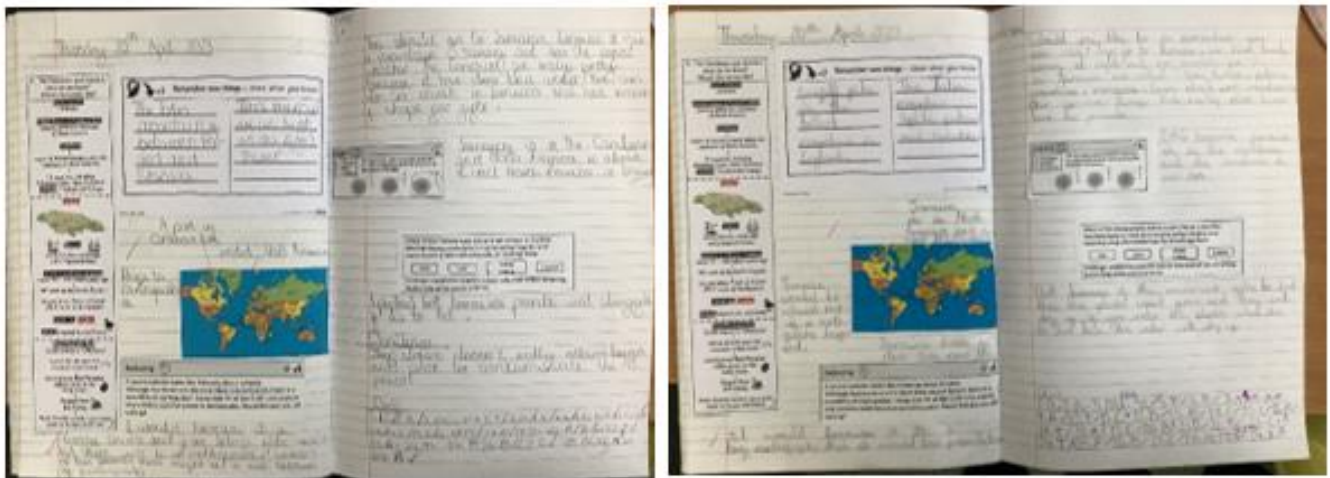
In DT, we have started to look into structures. We have explored the different styles of structure on a bridge. The children have used straws and pipe cleaners to make a range of different joins.



In Maths, the children have shown so much resilience and optimism when it came to our new unit. We have been learning all about converting units of measure. They have worked really hard on this and we are proud of how focused and driven they have been.



In Geography, the children have really enjoyed exploring the comparison of places. We have explored England, Poland and Jamaica. They have been working hard to think critically to solve the Geography challenges.



Place Farm
Primary
Summer Disco!
Thursday 22nd June '23

EYFS disco will run during the school day from 2:30pm until 3:00pm. EYFS pupils can wear non-uniform for this day. Tickets cost £1 and will include a snack.

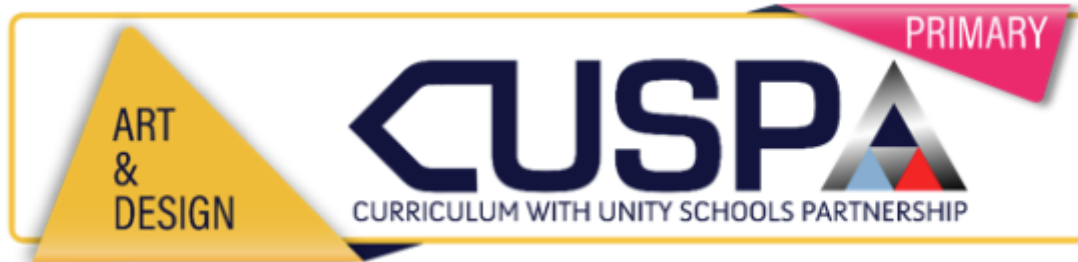
Year 1, Year 2 and Year 3 disco will run from 3:30pm-4:45pm. Pupils can bring a change of clothes to school to change into before the disco. Tickets will cost £3.00 and will include a snack.

Year 4 and Year 5 disco will run from 5:00pm- 6:15pm. Tickets cost £3.00 and will include a snack.

There will also be small items, such as glow sticks, available to purchase on the day so children are welcome to bring additional money if they wish.

Any money raised will go back to the pupils in the form of an enrichment activity (such as a visitor into school).

Please pay for your ticket on ParentPay or on entry to the disco.



Unity Schools Partnership Art Festival 26th June - 29th June

Theme: Celebrating togetherness through art

We are incredibly excited to announce that there will be an art festival held across the trust after half term, during curriculum time. The festival will launch with a live assembly and will then include live art workshops, guided digital exhibition tours and pupil exhibitions and all year groups will be involved in producing some fabulous pieces of art.

The guided digital exhibition tours will consist of the following themes:

- EYFS: Horses
- Year 1: Surprised!
- Year 2: Suffolk Landscapes
- Year 3: Pointillism
- Year 4: Leonardo Da Vinci
- Year 5: Renoir
- Year 6: Rembrandt

These weeks provide wonderful opportunities to the pupils of Place Farm and are heavily subsidised by school funds. To support the success of this week, we are asking that parents please consider providing a donation of £1 (more if you feel able) to go towards the resources used to create the artistic pieces - we thank you hugely in advance for your support with this! This could be provided through ParentPay (payment has been set up), or through cash handed to the class teacher.

[Thank you so much to those who have already donated!](#)

Year 2 Skills Escalator Day!

On Tuesday the children in Year 2 were invited to the trust offices to take part in a skills escalator day. There were several local authorities there that taught the children what skills you need to gain a job in these professions. We saw West Suffolk Council, Waste Management, Firefighters and UK Power Network.







Parent's Wellbeing Coffee Morning Tuesday 7th June 9am to 11am

Pop in for a coffee and a chat after the morning school run.

Reuben from Suffolk Wellbeing, to let you know what support the Wellbeing Service has to offer, and how you can access these services.

Any questions, please speak to
Mrs Bavester





A career in teaching?

<https://ctsnscitt.info/>

Come along to one of our summer term teacher training information events to find out more

CTSN SCITT is recruiting to its 2023-24 school-based teacher training programmes
We offer primary & secondary, salaried & non-salaried, full-time & part-time initial teacher training
across Cambridgeshire, west Suffolk, and north Essex

Wednesday 7th June, 4.30-5.30pm online via Zoom

Register an interest via Eventbrite using the QR code on the right
or via this link: <https://www.eventbrite.co.uk/e/602540283207>



Tuesday 13th June, 5-8pm face-to-face in Ipswich

Book (free) via Eventbrite using the QR code on the left or via this link:
<https://getintoteaching.education.gov.uk/events/230613-get-into-teaching-east-of-england-event>

Tuesday 19th June, 4-5pm online via Zoom

Register an interest via Eventbrite using the QR code on the right
or via this link: <https://www.eventbrite.co.uk/e/639229752397>



Wednesday 28th June, 6-7pm online via Zoom

Book (free) via Eventbrite using the QR code on the left
or via this link: <https://www.eventbrite.co.uk/e/639232781457>



Year 2 parents - are you ready for September?

Your child will no longer receive Universal Infant Free School Meals when they move to Year 3 unless you **apply now** and are eligible.

You will save over £435 a year and your child's school will receive extra funding to support your child with their learning.

If you have already applied and have been found to be eligible, you do not need to reapply.

To be eligible for Free School Meals you must receive one of the following:

- Universal Credit (up to £7,400 net earned income)
- Income Support
- Income based Job Seeker's Allowance
- Income related Employment and Support Allowance
- Guarantee element of State Pension Credit
- If you are supported under Part VI of the Immigration and Asylum Act 1999
- Child Tax Credit but **no element of Working Tax Credit** and have an annual income that does not exceed £16,190.
- Working Tax Credit 4 week run on



Applying online only takes a few minutes and is easy. Visit www.suffolk.gov.uk/freeschoolmeals



LDN Wrestling
26th May 7:30PM
Ticket Price £17.00 | Concessions £13.00
Family-friendly entertainment back by popular demand.



The Super Mario Bros Movie
27th May 11:00AM & 2:30PM
Ticket Price £5.50
Join Mario and crew on their debut movie adventure.



MARK THOMPSON'S SPECTACULAR SCIENCE SHOW
30th May 3:00PM
Ticket Price £18.00 | Concessions £16.00
See science in a new way, fun and entertaining.



The Giant's Loo Roll
1st June 2:00PM
Ticket Price £12.50
The famous book brought to life on stage.



West End Magic
2nd June 7:30PM
Ticket Price £16.00 | Concessions £11.00
A family-friendly show of magic and comedy.



Rapunzel
4th June 1:00PM & 4:30PM
Ticket Price £16.50 | Concessions £14.50
Can you help save Rapunzel for the evil Mother Gothel.



May 2023

Dear Parent/Carer

Suffolk County Council is pleased to confirm a further discretionary grant is available to support low-income families over the May half term. The grant will be ordered by your child(ren)'s school and will be issued as a £15 Edenred supermarket voucher for each eligible child. The grant is to help families with their essential living costs during the school holiday.

Please note that this grant will be issued to you via the email address that the school holds for you so please ensure that this address is up to date.

The voucher must be spent before the expiry date as failure to redeem by that date will mean you cannot be reissued, and you will lose the grant.

We hope that this discretionary grant goes some way to help in supporting your family during the school holiday, whether buying food or freeing up some income to go towards energy and water bills or other essential living costs.

If you are financial struggling and require additional support, further information can be found at: www.suffolk.gov.uk/community-and-safety/communities/healthier/cost-of-living-support/.

Yours faithfully

Suffolk County Council

SUFFOLK COUNTY MUSIC SERVICE



Applications now open for the 2023-24 CMG season!

County Music Groups are our bespoke programme for Suffolk's finest young musicians. These groups rehearse during the school holidays and members get to attend rehearsal weekends, a residential course and a European music tour as part of the season. Aimed at musicians of grade 4 and above, this is a great opportunity to take your musical skills to another level and make music with like-minded people and make new friends.

Now featuring two new discount schemes - refer a friend and sibling discount, details on our website.

www.suffolkmusicshub.co.uk
county.musicservice@suffolk.gov.uk
01473 263400

Suffolk
Music Hub

 **Suffolk**
County Council





**THEATRE
ROYAL**
BURY ST EDMUNDS

SENsory

Youth Theatre

For young people who are learning disabled, neurodivergent or identify as having SEN to participate in creative play that is inclusive and accessible.

WHEN DO WE MEET?

AGES 4-7: SATURDAYS 10:00-10:40

AGES 8-12: TUESDAYS 16:15 -16:50

AGES 13-18: TUESDAYS 17:00-17:40

**COST: £60 per term
(Bursary places are available)**

WATCH OUR TRAILER!



Generously
funded by

GeeWizz
CHARITY

Charity Commission Reg. No: 1164303

ENGAGEMENT@THEATREROYAL.ORG





MAKING REMARKABLE
CHANGE HAPPEN

Unity Schools Partnership are Hiring!

Unity Schools Partnership is currently hiring. Please visit www.unitysp-careers.co.uk for our vacancies and to sign up to our job alerts.



Haverhill
tennis club



LTA
TENNIS
FOR BRITAIN



Ehringshausen Way
Haverhill, Suffolk, CB9 0ER



MAY HALF TERM TENNIS CAMPS HAVERHILL

4-14 year olds

May Half Term camps week: Tue 30th May - Thurs 1st June

- 4-8yrs - 9:00am - 11:00am
- 9-14yrs - 11:00am - 1:00pm

fun tennis activities learn all key shots make new friends equipment provided

- Per Day:
 - £12 members
 - £14 non-members
- Full Week:
 - £30 members
 - £36 non-members

BOOK NOW www.fullswingtennis.co.uk
☎ 07915 876595



Working towards a brighter future for Suffolk's children and young people!

Who are Suffolk Parent Carer Forum?

We are a group of parent carers who have come together to build the forum so that we can help shape the provisions and services our children and young people with special/additional needs and/or disabilities access. We do this through participation, consultation and co-production.

What are our aims & objectives?

- To be the strategic consultative body within Suffolk and represent the voices of families with children and young people with special/additional needs and/or disabilities.
- Providing a liaison point for Statutory and Voluntary Agencies within Suffolk, by using Experts by Experience to work in co-production with local services.
- To consult with and inform our membership with a view to ensuring that all children and young people in Suffolk with special/additional needs and/or disabilities meet their full potential and achieve the best possible outcomes.

How can you contact us?

Call us: 01473 760933

Find us: www.suffolkpcf.co.uk

Email us: info@suffolkpcf.co.uk

Tweet us: [www.twitter.com/suffolkpcf](https://twitter.com/suffolkpcf)

Like us: www.facebook.com/suffolkpcf



Do you have lived experience of having, or caring for someone with, special or additional needs and/or disabilities?
Do you live in Suffolk or use Suffolk based services?
If so, we want to hear from you.

Suffolk Parent Carer Forum's aim is to ensure that every parent carer or young person's voice, views and experience matter. We use these insights towards developing and improving services through participation, consultation and co-production.

We are reaching out to those with lived experience to be involved in the forum in any way they can. This can be by joining our free membership, interacting with our social media channels, sharing feedback or experiences with the Forum, attending focus groups or by becoming an Expert by Experience and sharing your expertise with strategic partners, service leads and decision-makers during meetings.

We can't do this without you!



Call us: 01473 760933

Find us: www.suffolkpcf.co.uk

Email us: info@suffolkpcf.co.uk

Tweet us: [www.twitter.com/suffolkpcf](https://twitter.com/suffolkpcf)

Like us: www.facebook.com/suffolkpcf

