

Friday 29th May 2020



Dear Parents and Carers,

Place Farm Primary Academy
PARTIAL RE-OPENING UPDATE

I hope that you are well and have enjoyed the wonderful weather over half term. You will probably have seen the announcement by the Prime Minister that the Government's tests for the next stage of lifting restrictions have been met, which means that he has confirmed the phased partial reopening of schools from Monday 1st June 2020.

As you know, we have been working hard to prepare the school to welcome back our EYFS, Key Worker and vulnerable pupils on 1st June.

Unfortunately, it is no longer possible to open for our Year One children on Monday 8th June, or for Year Six pupils. We have taken on board all advice about the different ways the school will operate in line with the guidance we have received from the Department for Education. We do not have the staff capacity or classroom space to open for more pupils.

We look forward to welcoming our EYFS, Key Worker and vulnerable children, on Monday. We will be sending parents of pupils in EYFS, and those accessing our Key Worker Provision, a further survey on Tuesday 2nd June about expected attendance for the week beginning 8th June.

In opening the school to more children, we are very conscious of our staff capacity and the possibility that this could change at very short notice. Unlike in more normal times, we will not be drawing on supply teachers, as we do not feel it is appropriate to bring different adults into the school at short notice. We will do everything we can to avoid it, **but I need to raise the possibility that classes might have to be closed at short notice.**

As I mentioned in my previous letter, we are sending our EYFS parents details of which group your child/children is/are in, via a private message on Class Dojo. Please note the drop-off and pick-up times and points of entry/exit for the different groups, in the table below. Please rest assured that adults will be on hand to assist you on the first morning, if you are unsure.

Drop-off and Pick-up times and points of entry/exit:

Key Worker Group A: Year 3 Queue down the hill on Crowland Road, towards the mini roundabout	8.30am	3.15pm
Key Worker Group B: Year 4 Queue up the hill on Crowland Road, towards Castle Lane	8.30am	3.15pm
Key Worker Group C: Year 5 Queue down the hill on Crowland Road, towards the mini roundabout	8.40am	3.25pm
Key Worker Group D: Year 6 Queue up the hill on Crowland Road, towards Castle Lane	8.40am	3.25pm
Key Worker Group E: Year 1 Enter via the doors at the side of the school hall	8.30am	3.15pm
Key Worker Group D: Year 2 Enter via the doors at the side of the school hall	8.40am	3.25pm

EYFS Group 1 Enter via the green gate next to the EYFS classes	8.30am	2.55pm
EYFS Group 2 Enter via the green gate next to the EYFS classes	8.40am	3.05pm
EYFS Group 3 Enter via the green gate next to the EYFS classes	8.50am	3.15pm
EYFS Group 4 Enter via the green gate next to the EYFS classes	9.00am	3.25pm
Rainbow Class pupils (only open to pupils from the Key Worker/Critical workers/Vulnerable pupils and EYFS)	9.10am	2.55pm

Siblings in different Year Groups: Please drop the youngest pupil off first. If you are a Key Worker and have children who will be in an EYFS class and others in Years One, Two, Three, Four, Five or Six who will need to continue to access Key Worker provision, please drop your youngest child off first.

We are staggering pick up and drop off times to reduce congestion on site. To minimise the number of people, close to the school, please ensure that only one adult brings your child to school and collects them at the end of the day. **Two metre 'queuing lines', similar to those used in supermarkets, will be marked out.** Please arrive promptly, but not early. If you need to get a message to your child's teacher, please telephone the Office on 01440 702836. You can also send a message via Class Dojo, but please be aware that Teachers will have limited opportunities to respond, during the school day.

Lunches and drinks:

Just to remind you, if you have not ordered a school packed lunch, please ensure that your child's packed lunch is in disposable wrappers. They will need their named drink bottle, but no other items from home.

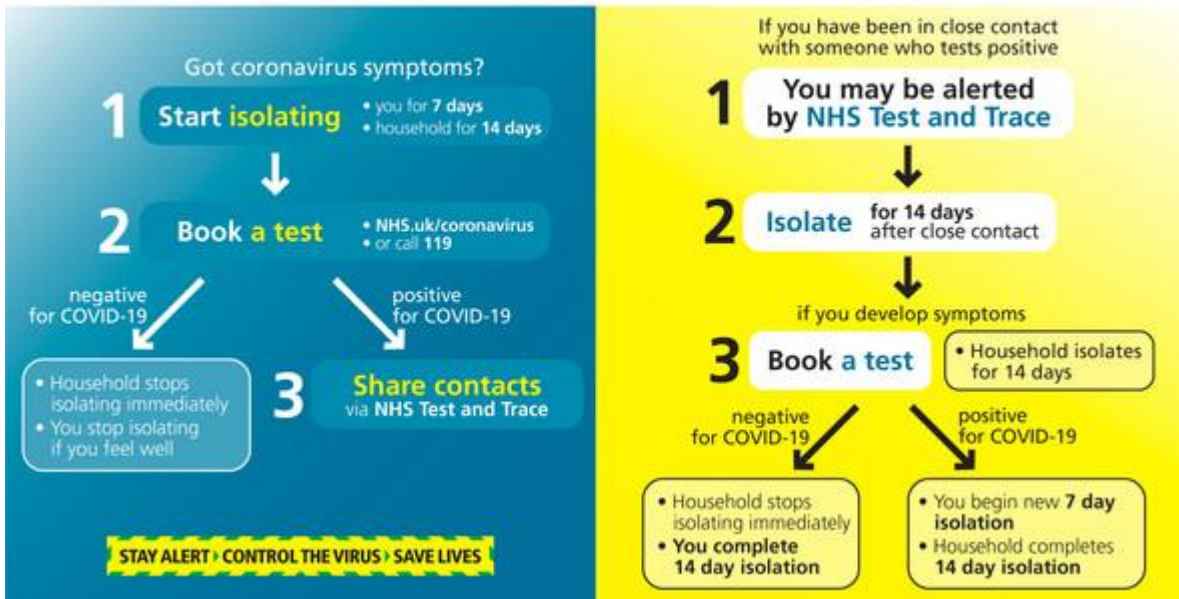
Clothing:

As the Government has advised that clean clothes should be worn daily, children do not need to wear school uniform.

Hot weather:

Please ensure that you apply sun cream, if appropriate, and that your child has a sun hat or coat, dependent on the weather forecast, each day.

You will have heard of the Test and Trace system that we are all being asked to follow. On the next page you will see a diagram which explains the system.



If you have a question about our plans for partial re-opening, please email admin@placefarm.org.uk, contact the school office on 01440 702836 or message your child's Teacher, via Class DoJo.

Thank you very much for your continued support and understanding.

Yours sincerely,

Mrs Jane Sendall
Headteacher