



Tuesday, 21st September 2021

Dear Parents and Carers,

On Monday morning we had an assembly and shared the expectations around lots of different things at school. Please read the important letter below, outlining expectations around uniform, footwear, water bottles and much more.

Our Place Farm Uniform

Wearing our Place Farm uniform with pride is extremely important. This is because it gives the children identity, self-confidence, a feeling of belonging and it helps the children to feel professional in the school setting. The children must come to school wearing the full Place Farm uniform every day when they come to school. Please do check the website if you are unsure.

After October half-term, all pupils (Years One- Six) will be expected to wear a collared shirt, and a tie, with their Place Farm jumper and/ or cardigan.



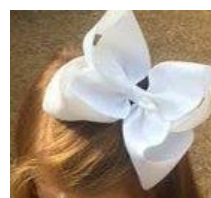
Earrings

Children are allowed to wear a single studded earring in each ear if they so wish. However, loop or dangling earrings are not allowed to be worn because they are dangerous. If your child has their ears pierced, then these will need to be removed by your child or covered with tape when your child has P.E.



Hair Ties

Children are allowed to wear plain blue and/or white chequered hair bands and ties. However, brightly coloured big bows and ribbons, as shown below, are not acceptable.



Watches and Accessories

Your child is allowed to wear a wristwatch to school. This can be either a digital or analogue watch. Smart watches, nail varnish and any other hair accessory are not part of the school uniform and are not allowed to be worn to school by your child.

Foot wear

Wearing the correct footwear is essential and it is still part of our uniform. Shoes must be black. Trainers are not part of the school uniform!



Water bottles and Pencil Cases

We encourage your child to bring in a water bottle to school and we would prefer your child to fill their bottles with water to keep them hydrated during the day.

Your child does not need to bring in a pencil case. All stationery will be provided for your child at school.

P.E Kits

Please ensure your child brings in their full Place Farm P.E kit when they have P.E. It is your child's responsibility to make sure that they have it on the given day that they have P.E.

If you have any questions with any of the expectations set in the letter above, please do not hesitate to contact Mr Wade or Mr Gudgeon.

Many thanks,

Mr Wade